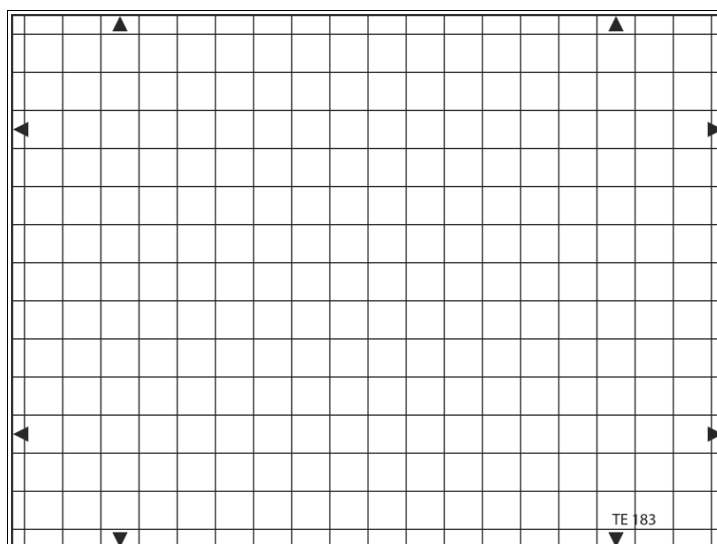




19 / 14 – GRID TEST CHART

REFLECTANCE



A grid structure of 14 horizontal and 19 vertical lines is arranged on a white background. The grid corresponds to a grid generated electronically by a test generator. The grid structure also corresponds to the ball structure of the T01 Geometry Test Chart.

Utilization

The test chart is designed for operational adjustment and control of TV cameras. The grid permits rough visual appraisal of scan linearity and the lines serve the purpose of adjusting registration.

The chart is available also with white lines on a black background.