



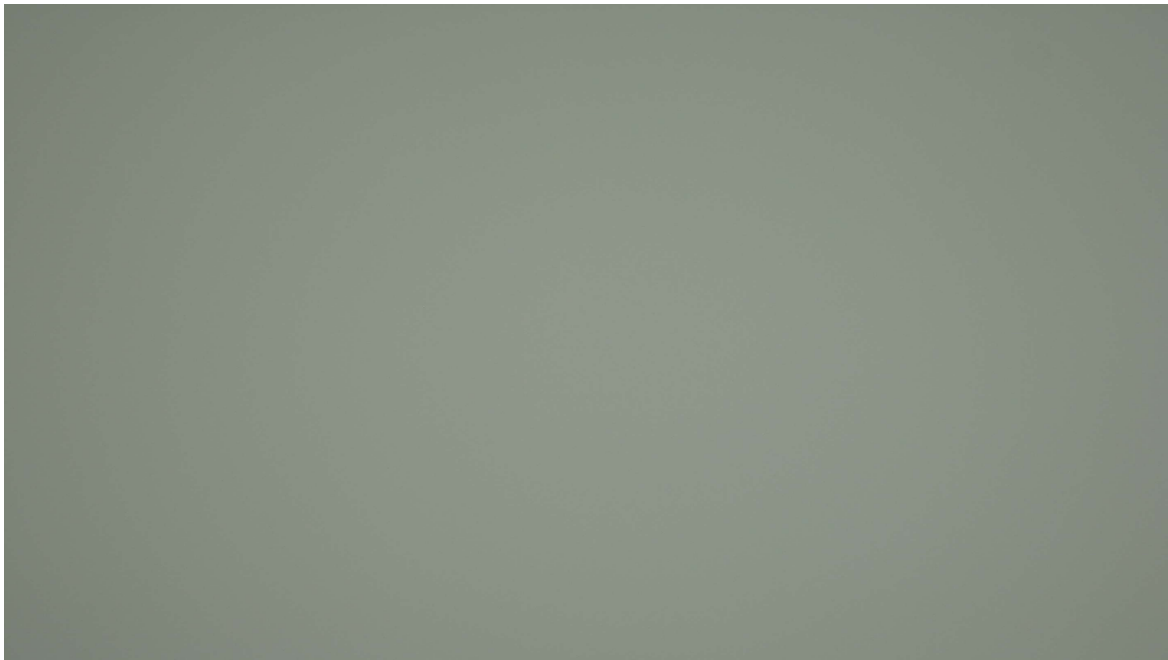
---

# Quick Start Guide

---

TE255 / TE282

July 17, 2017





# 1 PREPARE CHART

The diffuser charts have no front and backside. They can be used in all directions.






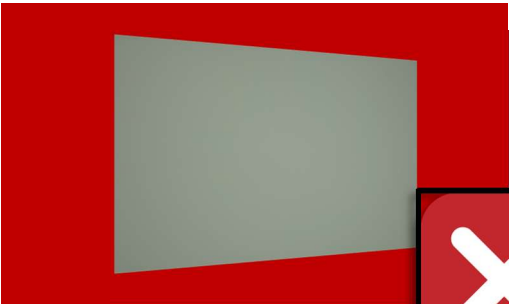

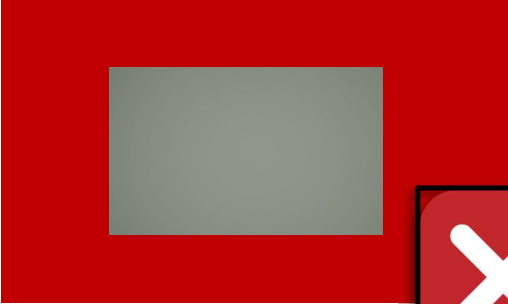

Mount chart in correct orientation

Illuminate uniformly

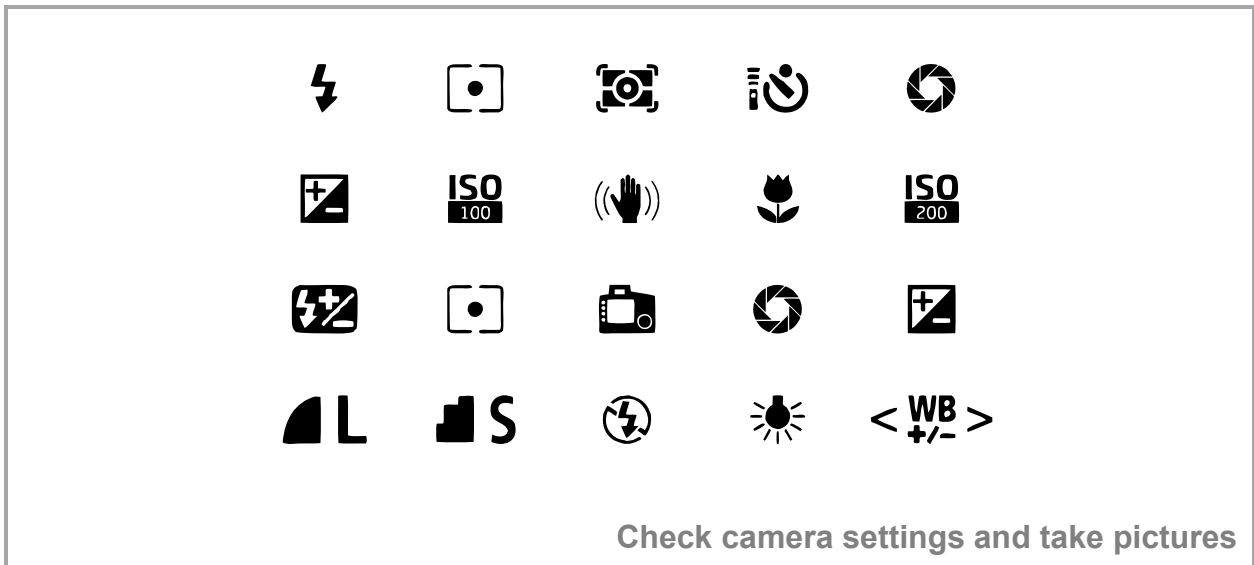


## 2 PREPARE CAMERA

chart size  
≠  
picture size



Align camera and chart



### 3 START SOFTWARE

**FREE DEMO** **OR BUY**

Request free demo or buy

www.image-engineering.de

Use shipped DVD or download\*

Install

Copy reference files if necessary

Attach USB dongle and run

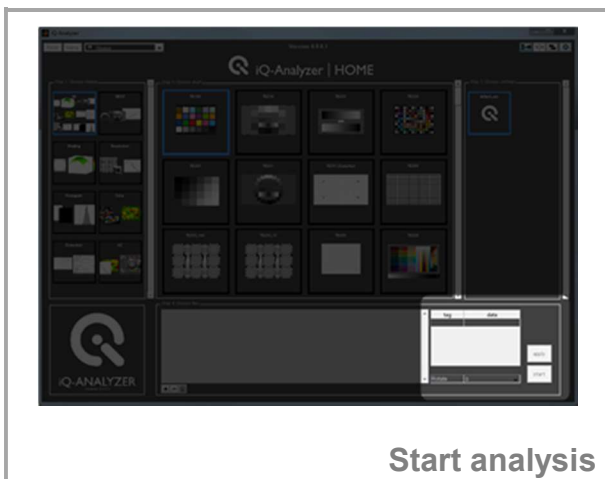
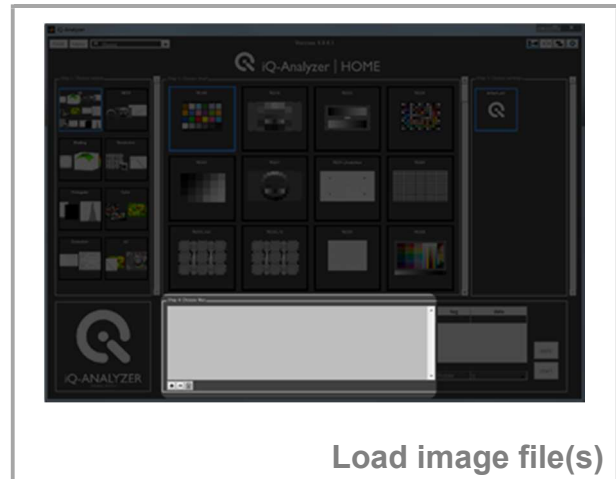
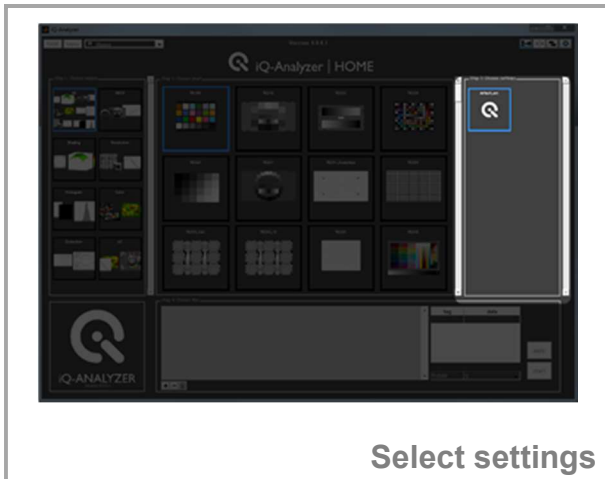
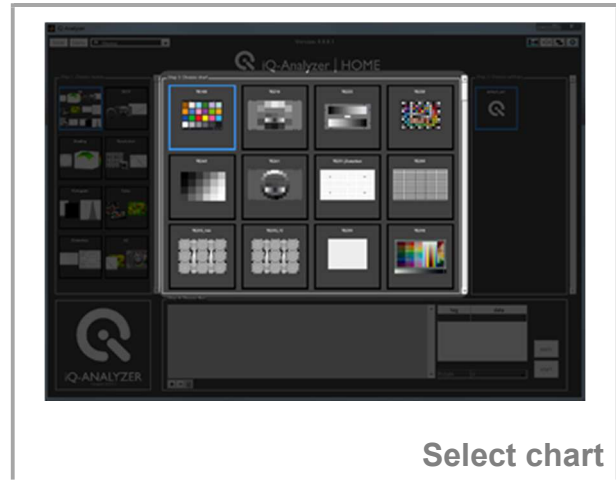
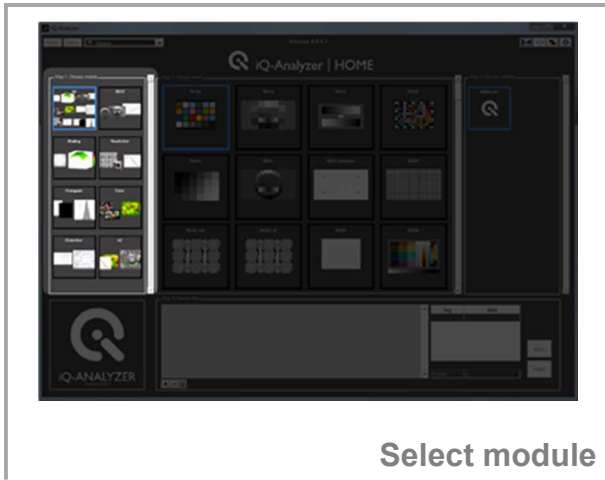
For a three month trial version of the iQ-Analyzer please contact

[sales@image-engineering.de](mailto:sales@image-engineering.de)

\* <https://www.image-engineering.de/products/software/376-iq-analyzer#downloads>



## 4 USE HOME SCREEN



For customizing the HOME SCREEN to your specific needs, please read the

**iQ-Analyzer user manual \***

**Please note: Default Home Screen just contains default settings.**

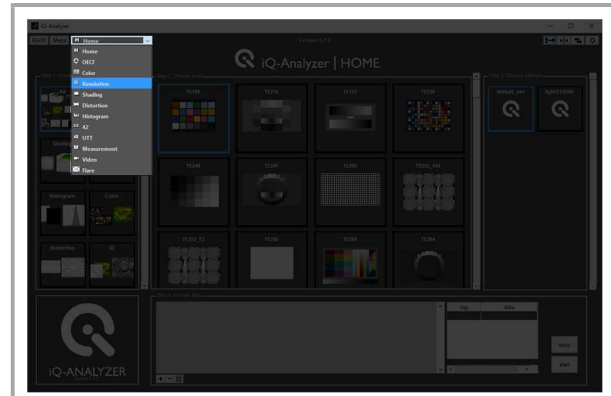
\* [https://www.image-engineering.de/content/products/software/analyzer/downloads/iQ-Analyzer\\_manual.pdf](https://www.image-engineering.de/content/products/software/analyzer/downloads/iQ-Analyzer_manual.pdf)



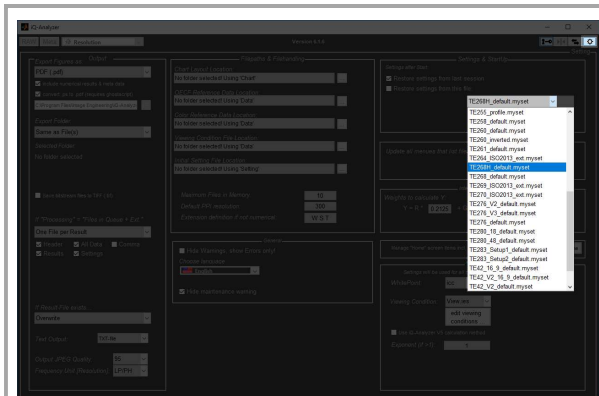
## 5 USE OF ADMINISTRATOR MODE



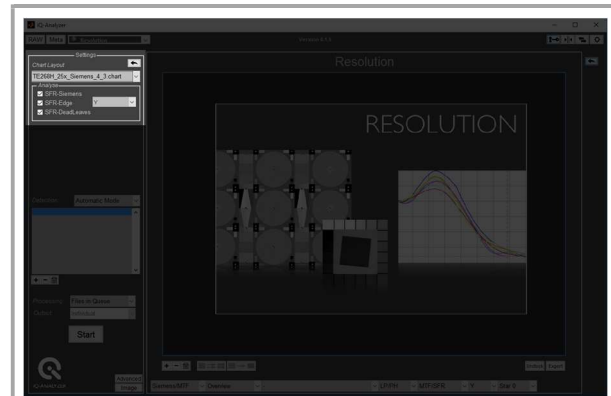
Enable Administrator Mode



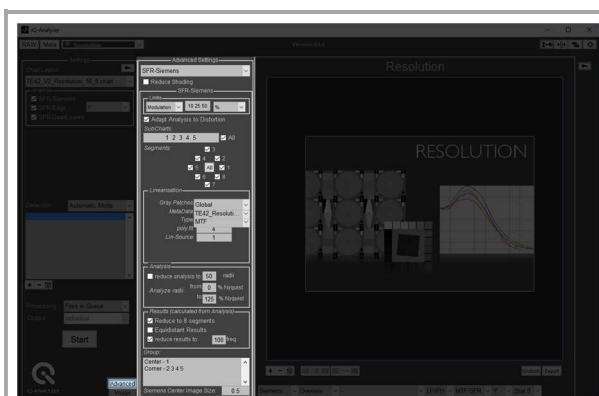
Choose module



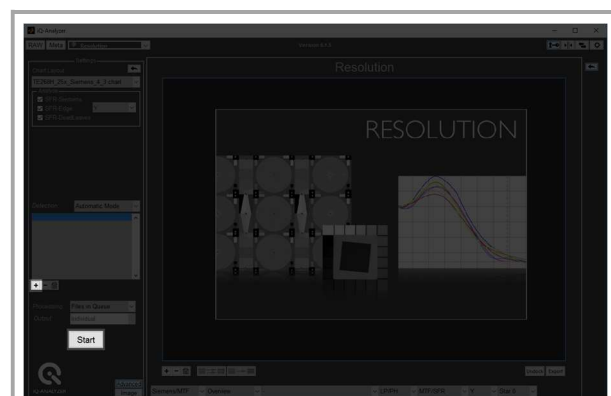
Go to Advanced Settings and choose .myset file for chart depending Settings



Check chart dependent Settings



Check Advanced Settings



Load image file(s) and start analysis

For all chart specific information about Settings and Advanced Settings please read the

**iQ-Analyzer user manual \***

\* [https://www.image-engineering.de/content/products/software/analyzer/downloads/iQ-Analyzer\\_manual.pdf](https://www.image-engineering.de/content/products/software/analyzer/downloads/iQ-Analyzer_manual.pdf)



## 6 WATCH THE RESULTS

Image

Result

Toggle between image and results

Luminance [stop]  
Luminance [Y]  
Luminance [CIE-L]  
Color [CIE-C]  
Color [G-R]  
Color [G-B]  
Noise Set1 [VN]  
Noise Set2 [VN]  
Noise Set3 [VN]  
Noise SNR [dB]  
Color [CIE-E<sub>ab</sub>]  
Chromaticity  
Color [R/G & B/G]  
Luminance [Y]

3D  
Contour  
Plot

Toggle between different result views



**Hide and show side panels**

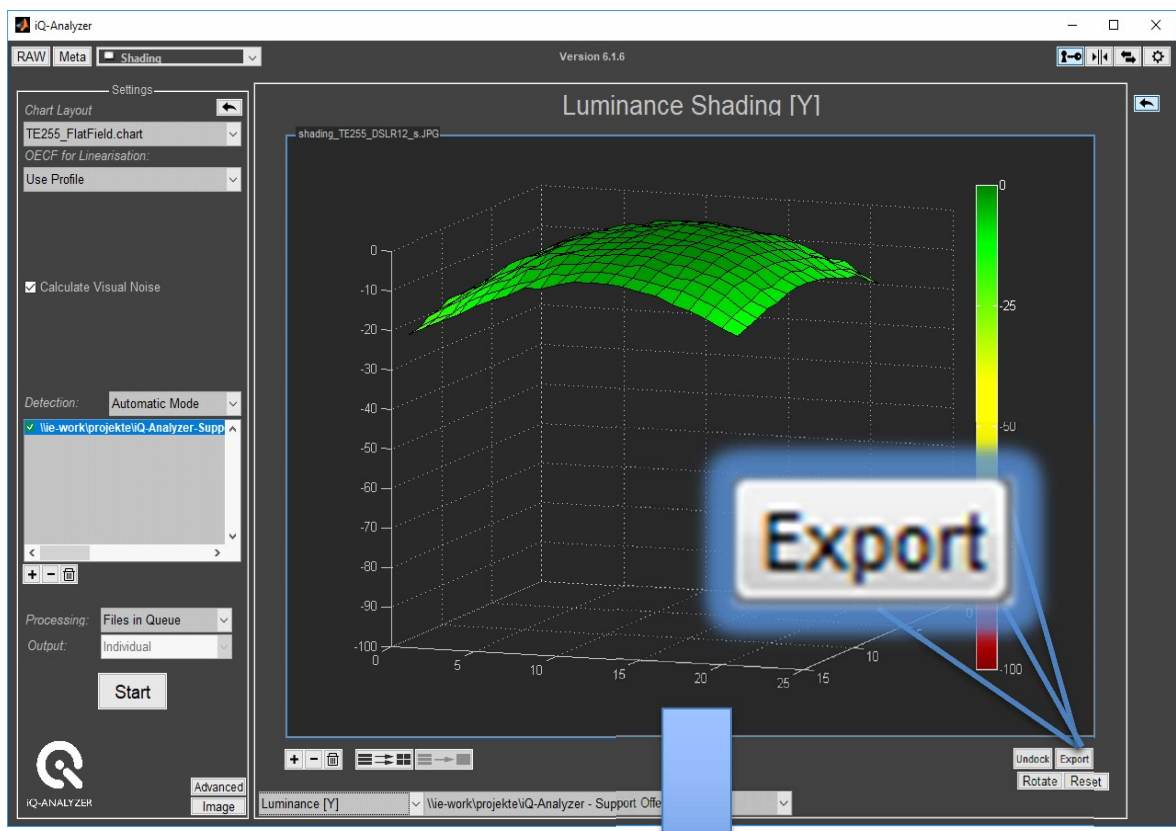
**View auto-generated result files**

**Congratulation!**  
**You ran your first analysis!**





# 7 WHAT'S NEXT?



Luminance Shading [Y]

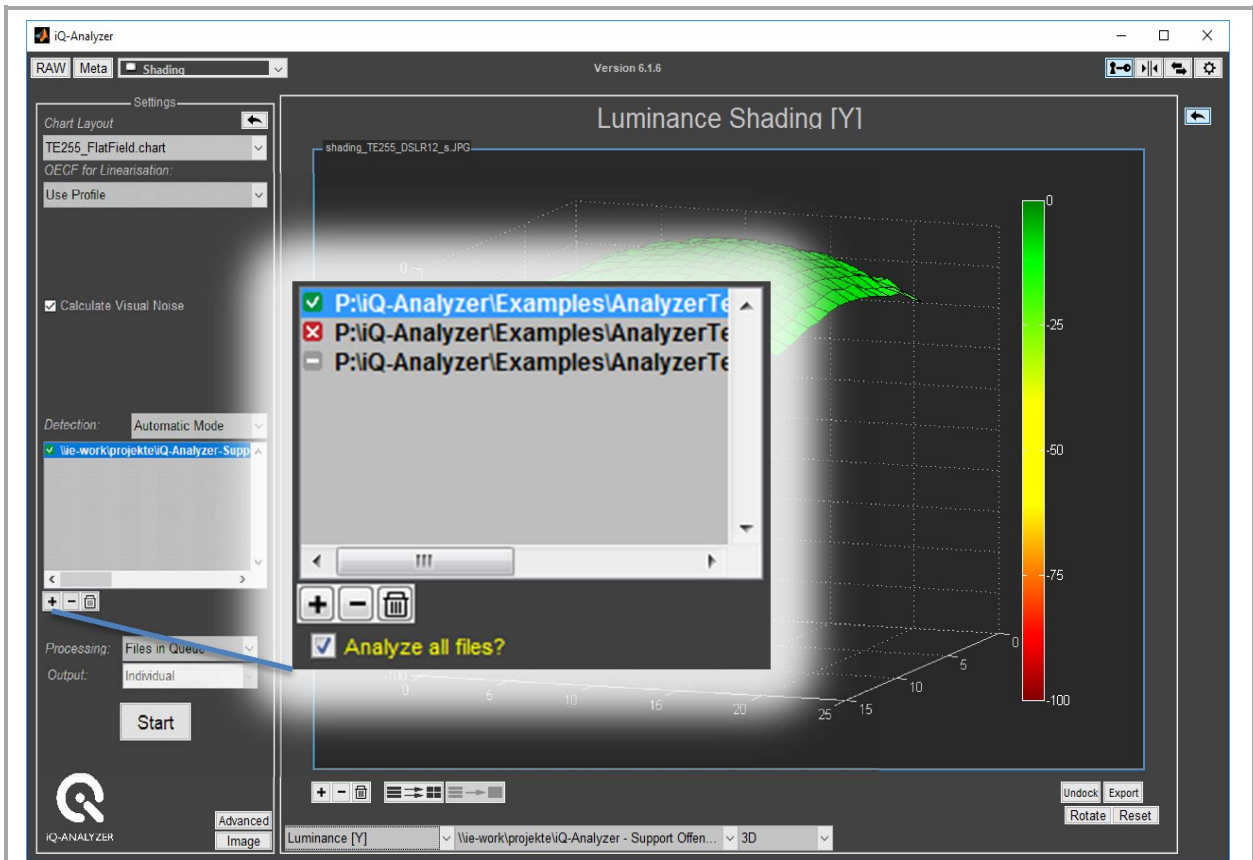
shading\_TE255\_DSLR12\_s.JPG

Make	exampleimage
Model	DSLR12
Width	2848
Height	2136
Time	200
F-Stop	4.0
ISO	100
f [mm]	16.1
EV	-
Serial:	
Lens:	
Firmware:	noExif
Illumination [lux]:	
Object Distance [m]:	
Laboratory:	
Operator:	

-Luminance-	
Shading [f-stop]	0.5
Shading [%]	16.7
dL	9.3
Shading [%lin]	31.7
percentilesY [DV]	-17.1/-0.8/-0.4/0.6
percentilesY [f-stop]	-0.39/-0.03/-0.01/0.01
-Color-	
dEab	2.0
dC	3.7
dG-R [DV]	5.8
dG-B [DV]	6.1
R/G&B/G	1.02/1.02
-Noise-	
dSNR [dB]	10.2
dVNSet1	1.5
dVNSet2	0.9
dVNSet3	1.0

iq-ANALYZER

Export results



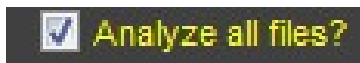
**Analysis successful**



**Analysis failed**



**Not analyzed yet**



**Analyze successfully analyzed images again?**

**Change settings and re-start analysis**



## 8 NEED HELP?



Read the iQ-Analyzer user manual\*



Attend our Webinars\*\*



Ask our Support Team

## 9 CONTACT US

**Image Engineering GmbH & Co. KG  
Support**

T +49 2273 99 991 0  
F +49 2273 99 991 10

[support@image-engineering.de](mailto:support@image-engineering.de)

Germany

**Image Engineering GmbH & Co. KG  
Sales**

T +49 2273 99 991 0  
F +49 2273 99 991 10

[sales@image-engineering.de](mailto:sales@image-engineering.de)

Germany

**Image Engineering GmbH & Co. KG  
Direct Marketing Sales and Applications**

T +1 669 200 8921

[sales@image-engineering.us](mailto:sales@image-engineering.us)

USA

\* [https://www.image-engineering.de/content/products/software/analyzer/downloads/iQ-Analyzer\\_manual.pdf](https://www.image-engineering.de/content/products/software/analyzer/downloads/iQ-Analyzer_manual.pdf)

\*\* <https://www.image-engineering.de/products/software/376-iq-analyzer#webinars>