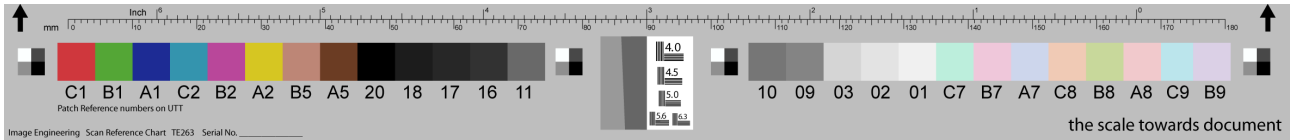




SCAN REFERENCE CHART

REFLECTANCE

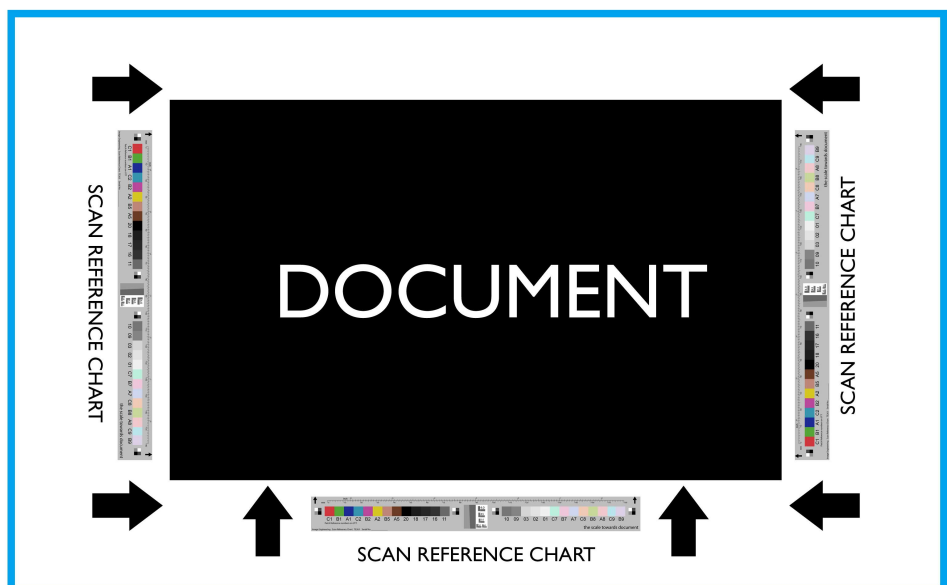


To ensure that each and every scan is in focus, correctly exposed, and white balanced the scan reference chart is the right chart to put aside of your archiving assets. The chart consists of gray steps, color patches, a scale and resolution pattern. It allows automatic analysis of each scanned page and - in combination with the right software - provides information for the reason if a specific page happens to be out of specs.

	C1	B1	A1	C2	B2	A2	B5	A5	20	18	17	16	11
L	46.0	53.0	18.0	48.0	49.0	82.0	64.0	32.0	5.0	10.0	15.0	20.0	45
a	64.0	-45.0	24.0	-34.0	56.0	3.0	20.0	24.0	0.0	0.0	0.0	0.0	0.0
b	34.0	38.0	-61.0	-31.0	-14.0	90.0	19.0	32.0	0.0	0.0	0.0	0.0	0.0
D									2.26	1.95	1.72	1.52	0.84

	10	9	3	2	1	C7	B7	A7	C8	B8	A8	C9	B9
L	50.0	55.0	85.0	90.0	95.0	86.0	85.0	85.0	87.0	85.0	86.0	85.0	85.0
a	0.0	0.0	0.0	0.0	0.0	-19.0	13.0	-2.0	10.0	-11.0	13.0	-14.0	4.0
b	0.0	0.0	0.0	0.0	0.0	-1.0	0.0	-9.0	18.0	26.0	7.0	-9.0	-6.0
D	0.73	0.64	0.18	0.12	0.06								

The arrows and the scale have to point towards the document.



SCANNER