

TE42

A multipurpose test chart for a quick image quality overview

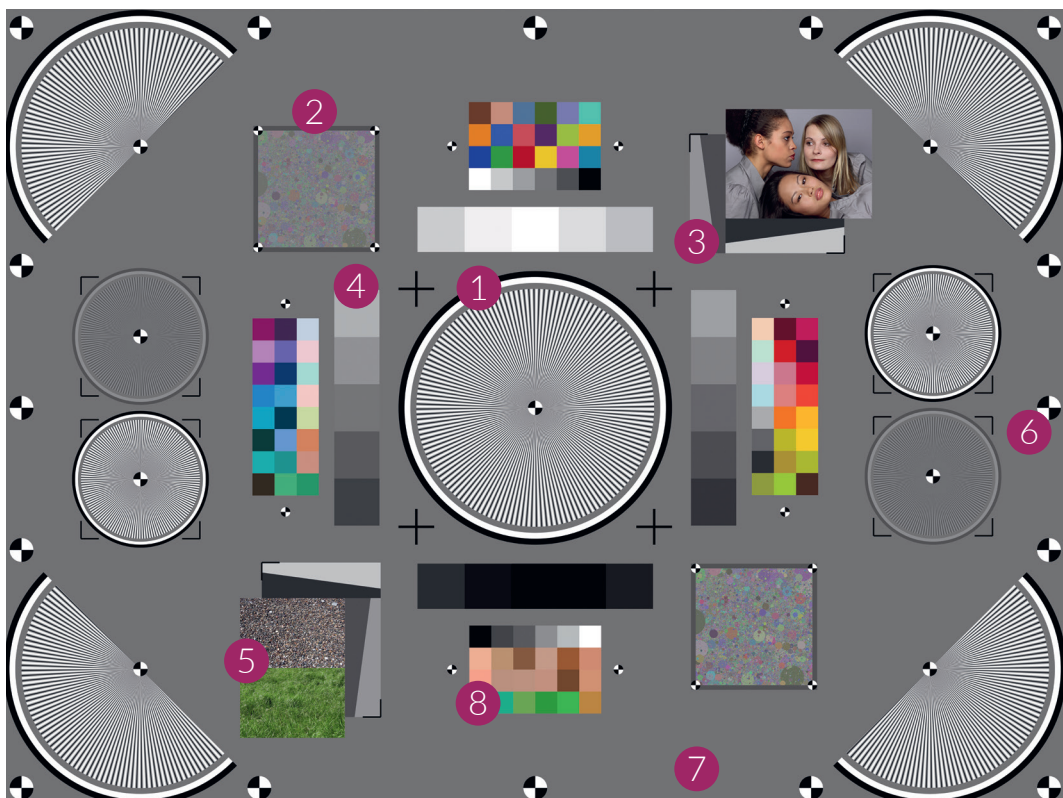
The TE42 chart is a multipurpose test chart that can quickly gather an overview of a camera's image quality performance in a single image. The chart is designed with multiple objects on the same chart plane for testing a wide variety of image quality factors, all of which can be analyzed using the iQ-Analyzer-X software (not included with chart).

We often use the TE42 in our test lab, and it has become one of our most popular test charts due to its flexibility.



The TE42 chart plane has properties for analyzing many different image quality factors including:

- | | |
|-------------------------------|----------------------|
| 1 Resolution ISO 12233:2023 | 5 Visual analysis |
| 2 Texture loss ISO 12233:2023 | 6 Distortion |
| 3 Sharpening ISO 12233:2023 | 7 Shading |
| 4 OECF and Noise ISO 15739 | 8 Color reproduction |



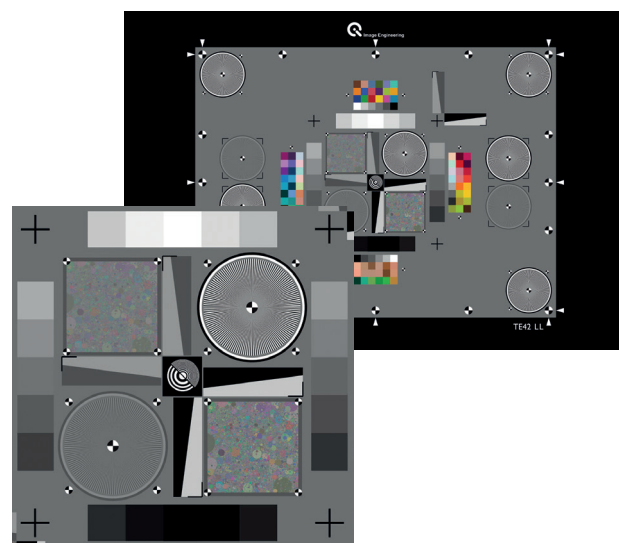
TE42-LL

A multi-purpose test chart for low-light performance testing

The TE42-LL test chart is a multi-purpose test chart used primarily for measuring the low-light performance of digital cameras as described by ISO 19093. This chart is based on the original TE42 chart but now has all of the important structures, such as the low-light Siemens stars and slanted edges, at the center of the layout to avoid fall off at the corners.

Main Features

- ✱ The exact chart recommended in ISO 19093
- ✱ Test targets all equal distance from each other
- ✱ Analyze all important low-light factors in one image

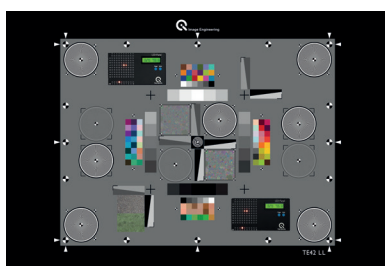


TE42 options

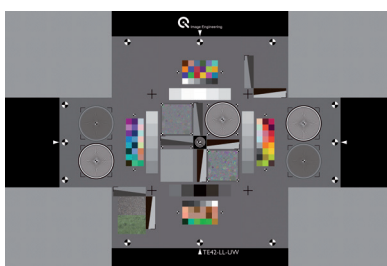
The TE42-LL Timing chart is the chart, but it now incorporates two LED-Panels for measuring the important timing features of a camera in a low-light situation. The LED-Panel can analyze all of the various timing factors described in ISO 15781, including shooting

The TE42-LL-Ultra-Wide (UW) version of the TE42-LL chart uses tartan targets to allow you to analyze resolution even with distortion present (which is typical for ultra-wide cameras).

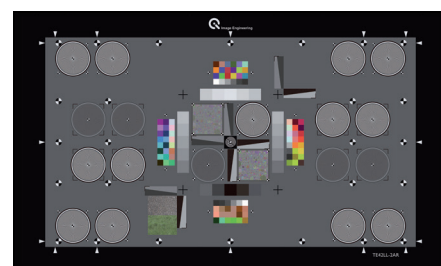
The TE42-LL-2AR incorporates two aspect ratios (2AR) into one chart. Both 4:3 and 16:9 aspect ratios are now on one chart plane. This version has a dividing wall (easily insert or remove), allowing you to create a “twin” scene.



TE42-LL Timing



TE42-LL-UW



TE42-LL-2AR