



---

# LE6 USB-INTERFACE

## V1.0

---

User's guide





## INTRODUCTION

The Image Engineering LE6 USB-Interface is an hardware interface for the LE6 integration sphere. It allows to measure and control the illumination level automatically by using a PC.

## INSTALLATION GUIDE

1. Installing Hardware drivers  
Run **setup.exe** in the **Hardware Driver** folder and follow the instructions.
2. Connecting Hardware  
Connect the USB-Interface to your PC, two more Hardware drivers will be installed automatically.
3. To run the software, **Matlab Component Runtime** is required  
Run **MCRInstaller.exe** in the **MCRInstaller** folder and follow the instructions.  
This will install the Matlab Component Runtime on your system, if necessary.
4. Copying program files  
Copy the folder **USB-Interface Software** on to your harddisk.

## SETTING UP THE HARDWARE AND CONNECTING TO LE6

Plug the grey control cable into the 8-pole connector and the black measuring cable into the BNC connector. Turn the rotary switch to the left stop position (position **A** or **USB operation**). Switch on the power switch and the luxmeter switch.



## RUNNING LE6 USB-INTERFACE SOFTWARE

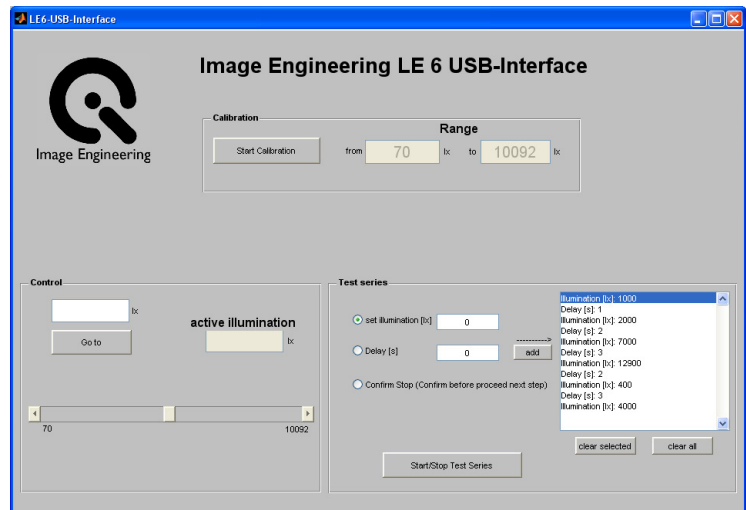
Run the **LE6\_USB\_Interface.exe** you will find the file in the **USB-Interface Software** folder you already copied to your harddisk.

### CALIBRATION PANEL

Push the button **Start Calibration** to figure out what the possible illumination is. It is recommended to run a calibration after you started the software the first time, whenever there is a change of ambient light or you change the testchart, you should do a calibration, too.

### CONTROL PANEL

Type a value (in lx) and press the **Go to** button, to get to the defined illumination. The value must be within the possible range. The Slider is another option to control the illumination.



### TEST SERIES PANEL

Create a list of illumination points and define the type of stopover you want to use. After you created a list, press the **Start/Stop Test Series** button to run your test series. The last testseries you used before closing the program, will be saved for the next session.

Trademarks // Windows is a registered trademark of Microsoft Corp., Matlab is a registered trademark of Mathworks Corp.

Copyright Information // By installing this software, you accept and agree to be bound by the terms of the software license agreement that appears below.

By installing this software, you accept and agree to be bound by the terms of this agreement.

Copyright © Image Engineering GmbH & Co. KG, 2011

THE SOFTWARE FURNISHED UNDER THIS AGREEMENT IS PROVIDED ON AN 'AS IS' BASIS, WITHOUT ANY WARRANTIES OR REPRESENTATIONS EXPRESS OR IMPLIED, INCLUDING, BUT NOT LIMITED TO, ANY IMPLIED WARRANTIES OF MERCHANTABILITY OR FITNESS FOR A PARTICULAR PURPOSE. IT IS SOLELY THE RESPONSIBILITY OF THE CONSUMER TO DETERMINE THE SOFTWARE'S SUITABILITY FOR A PARTICULAR PURPOSE OR USE. IMAGE ENGINEERING DIETMAR WUELLER, AND ANYONE ELSE WHO HAS BEEN INVOLVED IN THE CREATION, PRODUCTION, DELIVERY, OR SUPPORT OF THIS SOFTWARE, WILL IN NO EVENT BE LIABLE FOR DIRECT, INDIRECT, SPECIAL, CONSEQUENTIAL, OR INCIDENTAL DAMAGES RESULTING FROM ANY DEFECT, ERROR, OR OMISSION IN THE DISKETTE OR SOFTWARE OR FROM ANY OTHER EVENTS, INCLUDING, BUT NOT LIMITED TO, ANY INTERRUPTION OF SERVICE, LOSS OF PROFITS OR GOOD WILL, LEGAL ACTION OR ANY OTHER CONSEQUENTIAL DAMAGES. THE USER ASSUMES ALL RESPONSIBILITY ARISING FROM THE USE OF THIS SOFTWARE, FOR WHICH IMAGE ENGINEERING DIETMAR WUELLER SHALL HAVE NO LIABILITY, REGARDLESS OF WHETHER SUCH USE IS LAWFUL OR FORSEEABLE. IMAGE ENGINEERING DIETMAR WUELLER SHALL HAVE NO LIABILITY FOR ANY DATA OR PROGRAMS STORED BY OR USED WITH THIS SOFTWARE, INCLUDING THE COSTS OF RECOVERING SUCH DATA OR PROGRAMS. IMAGE ENGINEERING DIETMAR WUELLER RESERVES THE RIGHT TO MAKE CORRECTIONS OR IMPROVEMENTS TO THE INFORMATION PROVIDED AND TO THE RELATED SOFTWARE AT ANY TIME, WITHOUT NOTICE.