

# A New Dimension in Geometric Camera Calibration

Image Engineering GmbH & Co. KG

Dietmar Wueller

# Goals

Geometric camera calibration is essential

- To measure distance in images
- To detect objects in images
- To compensate for high distortion levels especially for wide field-of-view cameras
- To accurately align stereo camera pairs

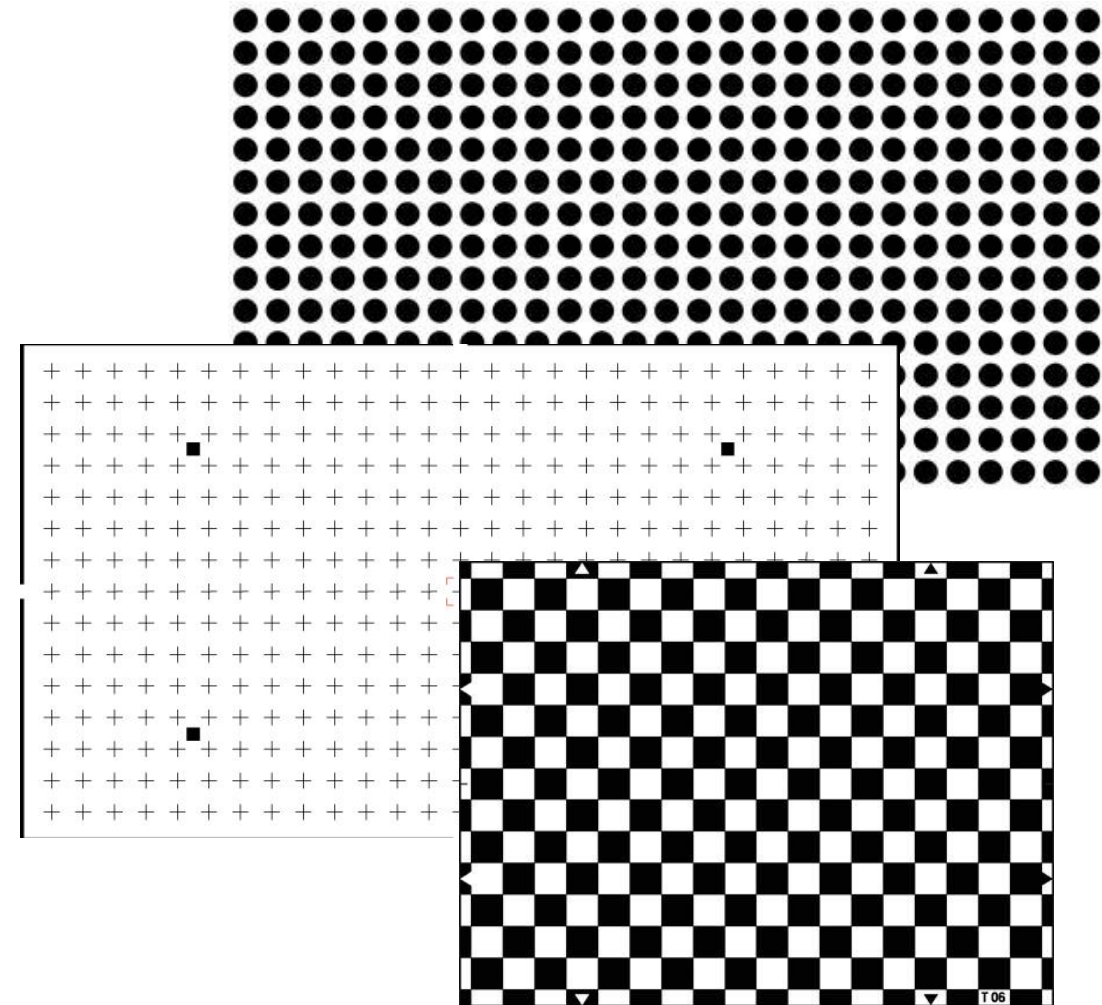


# Current methods

## Current methods for geometric calibration

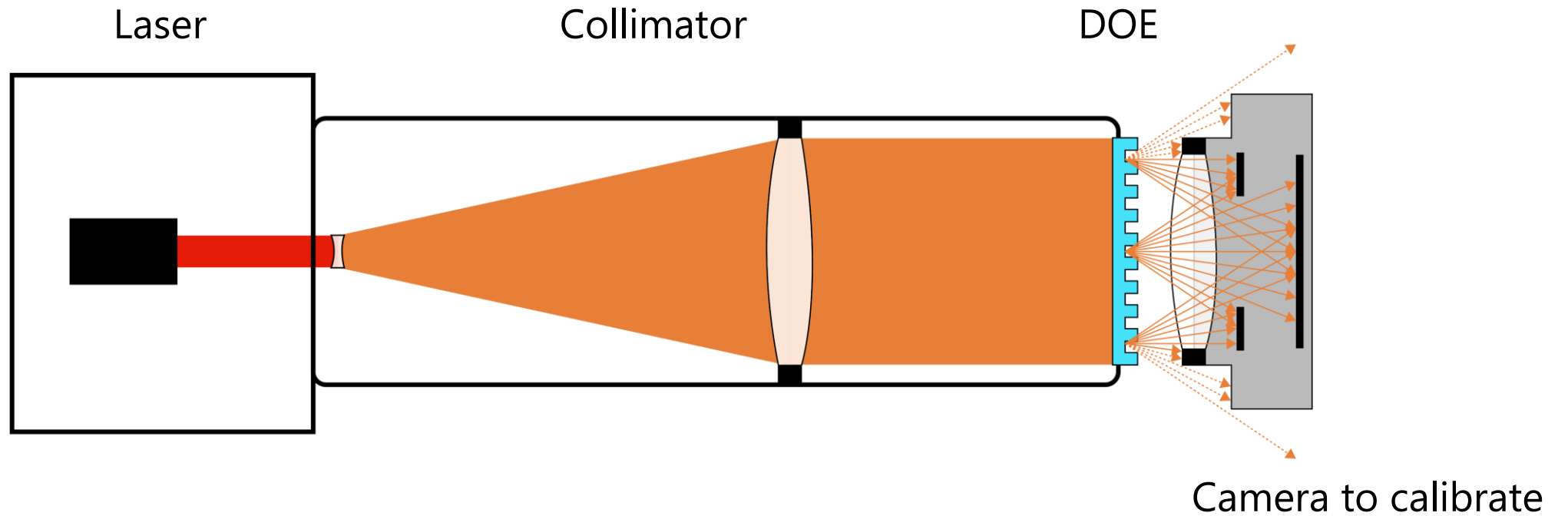
- Regular patterns to determine distortion over the imaging field
- Test chart based methods
- Large charts required for wide field-of-view cameras
- Relay lenses required for compact methods and solutions for measurements at infinity
  - Relay lenses introduce distortion and need to be characterized

These methods allow for distortion measurement and inner orientation but not outer orientation



# The new approach

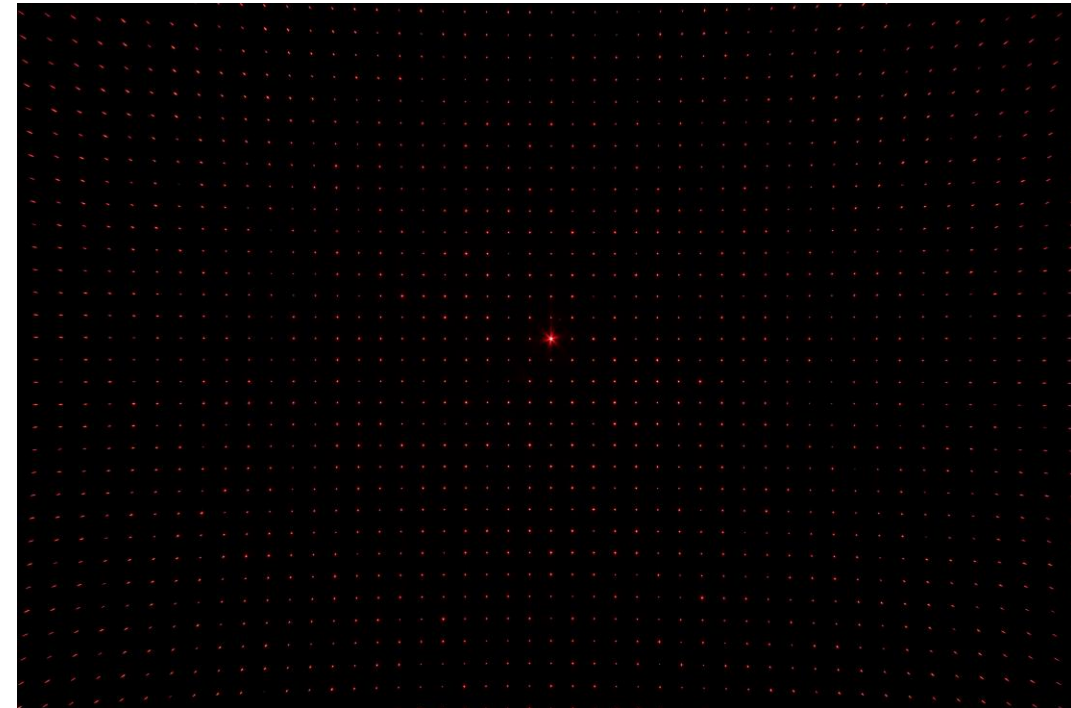
A beam expanded laser in combination with a diffractive optical element (DOE)



# The new approach

## Characteristics

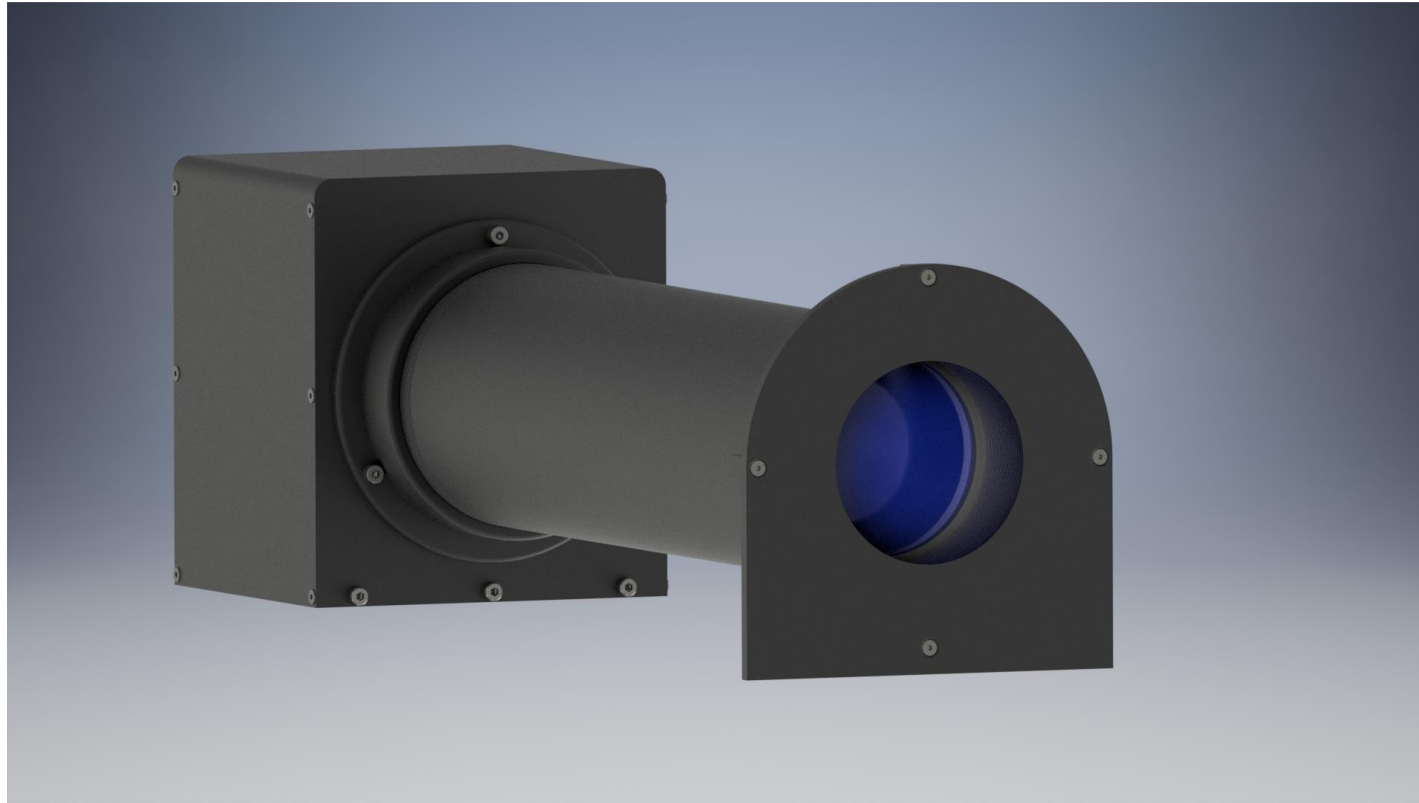
- Generating a regular grid of light spots originating from infinity
- Camera position is translation insensitive (to a certain extent)
- Easily manage the angle of camera rotation
- No relay lens required
- Very compact design
- Calibrate large field-of-view cameras
- Stereo camera adjustments



# The new approach

The prototype

The beam diameter is currently 75 mm



# The new approach

Background information:

The grating with its point grid from infinity is described by the following formula:

$$d = \left[ \lambda F_x + r_x, \lambda F_y + r_y, \left( 1 - (\lambda F_x + r_x)^2 - (\lambda F_y + r_y)^2 \right)^{1/2}, 0 \right]^T$$

with  $r$  describing the rotation of the DOE in relation to the expanded plane wave of the laser

$$r = [\sin(\beta), -\sin(\alpha)\cos(\beta), \cos(\alpha)\cos(\beta)]^T$$

and  $F$  being the frequency of the grating and  $\lambda$  being the wavelength of the laser

# The new approach

Background information:

The beam direction into the camera coordinate frame depends on the exterior orientation of the camera and as a result, the grating formula needs to be adjusted:

$$d' = \begin{bmatrix} R & t \\ 0 & 1 \end{bmatrix} d$$

with  $R$  being a 3x3 camera rotation matrix and  $t$  being the translation of the camera

This information shows that the mapping of ideal points is invariant of the translation.



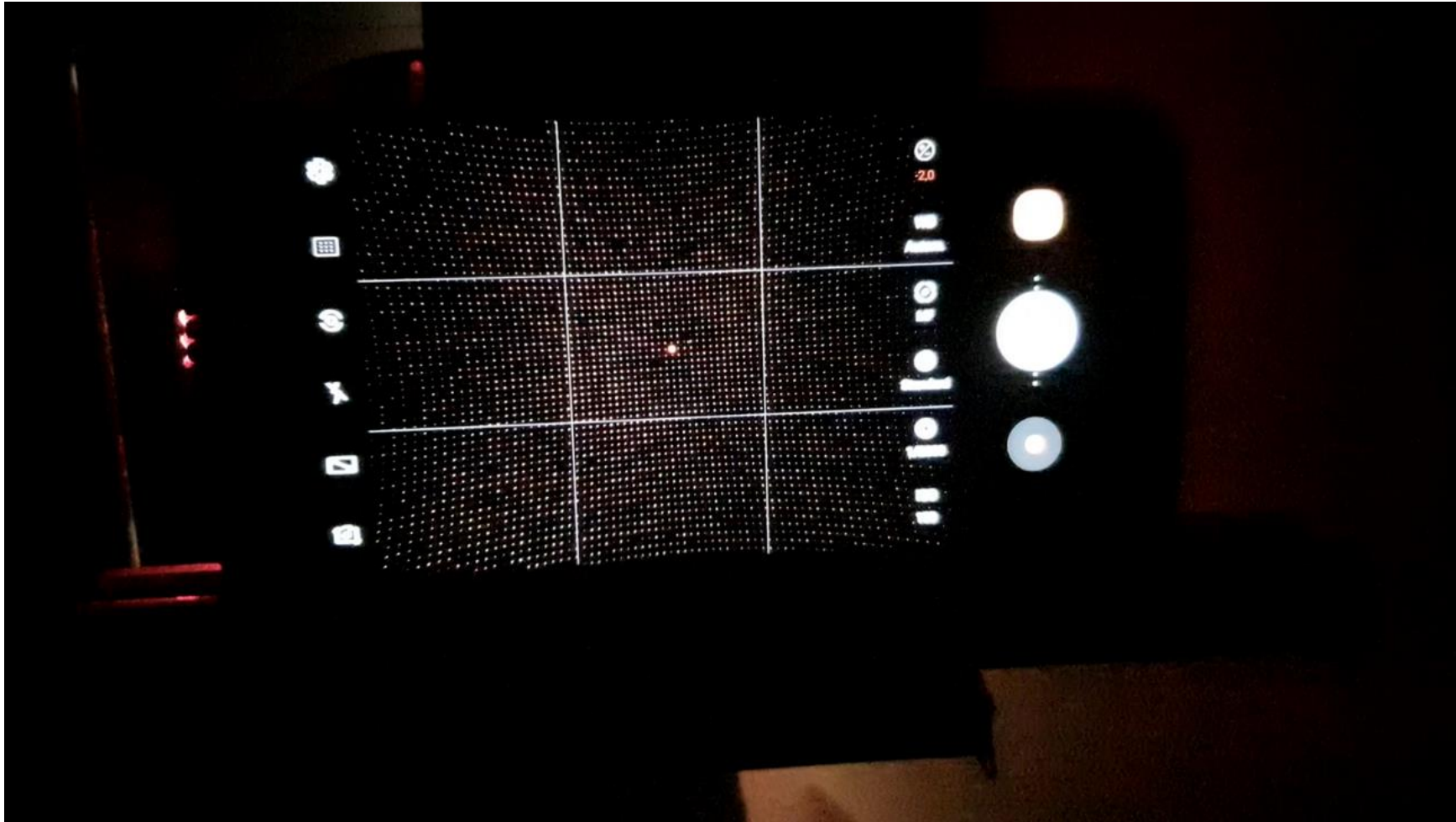
# The new approach

Translation independent



# The new approach

Rotation angles are part of the desired output when evaluating the alignment of cameras.



# The new approach

## Background information

The image created by the camera is a projection of the 3D image into the 2D space of the image:

$$\bullet \begin{bmatrix} x \\ y \\ 1 \end{bmatrix} = \begin{bmatrix} X/Z \\ Y/Z \\ 1 \end{bmatrix}$$

with  $Z$  being the projection plane  $Z = 1$

# The new approach

## Background information

For the image in pixel coordinates the camera matrix comes into play:

$$\begin{bmatrix} u \\ v \\ 1 \end{bmatrix} = K \begin{bmatrix} x \\ y \\ 1 \end{bmatrix}$$

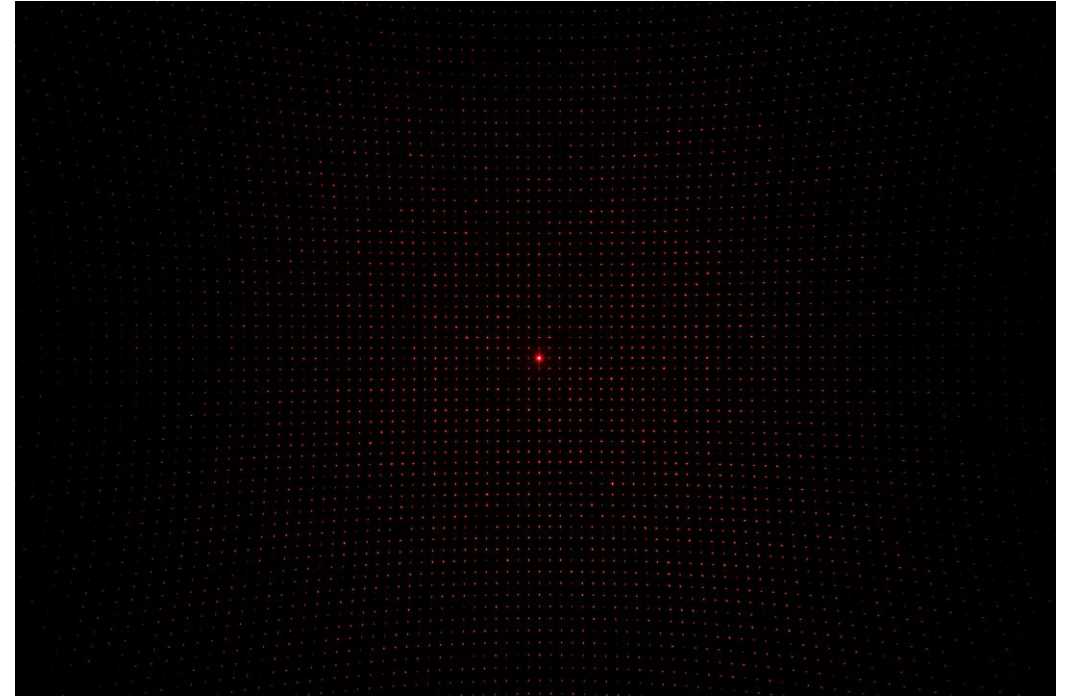
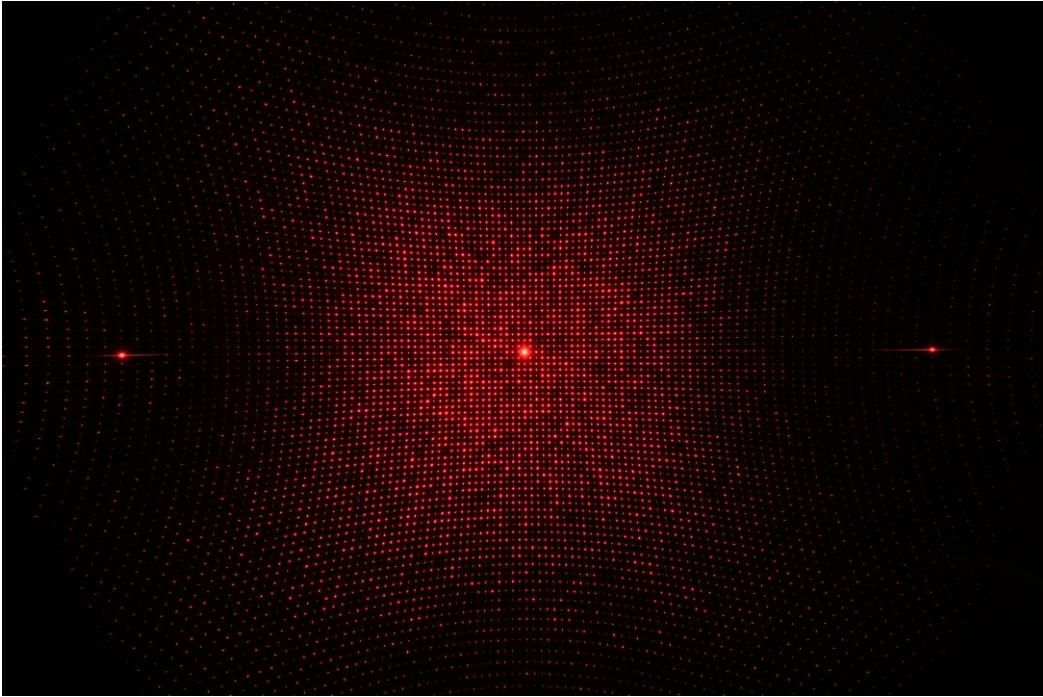
with

$$K = \begin{bmatrix} f & 0 & u_0 \\ 0 & f & v_0 \\ 0 & 0 & 1 \end{bmatrix}$$

with  $f$  being the focal length of the camera and  $u_0$  and  $v_0$  being the principal point. Now  $u$  and  $v$  are the ideal coordinates.

# The new approach

The impact of focal length / field-of-view on the point grid



The smaller the field-of-view the fewer available dots (measuring points). If there are too few dots, the DOE has to be exchanged. The max. field of view used is app. 125°.

# The new approach

## Background information

Once we add the distortion model, we end up with:

$$\begin{bmatrix} u \\ v \end{bmatrix} = \begin{bmatrix} u_0 \\ v_0 \end{bmatrix} + f \begin{bmatrix} x \\ y \end{bmatrix} (1 + k_q r^2 + k_q r^4 + k_q r^6 + \dots)$$

with  $r = x^2 + y^2$

# The new approach

## Background information

We can now calculate all necessary values for the geometric calibration:

- The principle point  $u_0$  and  $v_0$
- The focal length  $f$
- The distortion coefficients  $k_1, k_2, k_3$
- The DOE angle in relation to the incident expanded plane laser beam  $\alpha$  and  $\beta$
- The camera angles in relation to the incident expanded plane laser beam  $\varpi, \varphi, \kappa$



# Image Engineering GmbH & Co. KG

Im Gleisdreieck 5 / 50169 Kerpen / Germany

T +49 2273 99 99 1 - 0 / F +49 2273 99 99 1 - 10

USA: +1 408 386 1496 / China: +86 158 8961 9096